

QTY	NO.	LOCATION	SIZE (NOMINAL) width x height x thickness	DOOR MATERIAL	FRAME	FIRE RATING	HWFR TYPE	DETAIL NUMBER HEAD JAMB SILL	REMARKS / NOTES
-	①	ENTRY DOOR	PR. 3'-0" X 7'-0" X 1 1/2"	GLASS	FRAMELESS	NONE	-	B A08.4 A A08.3b C A08.4	
-	②	VESTIBULE DOOR	PR. 3'-0" X 7'-0" X 1 3/4"	GLASS/METAL	METAL	NONE	B-3	F A08.2b A A08.3b C A08.3b	
-	③	FRAMED ENTRY DOOR	PR. 3'-0" X 7'-0" X 1 3/4"	GLASS/METAL	METAL	NONE	B-1	F A08.3a A A08.3a C A08.3a	
2	④	(E) FRAMED ENTRY DOOR	(E) DOORS & FRAMES TO REMAIN				B-2	-	NEW HARDWARE AS REQUIRED
1	⑤	FITTING ROOM	2'-9" X 6'-0" X 1 1/8"	MDF	-	NONE	D	-	PRE-FAB/PRE-FIN BY MFG
1	⑥	FITTING ROOM (ACC.)	3'-0" X 6'-0" X 1 1/8"	MDF	-	NONE	D	-	PRE-FAB/PRE-FIN BY MFG
2	⑦	(E) TOILET ROOM	(E) DOOR & FRAME TO REMAIN				-	-	REPLACE HARDWARE AS REQUIRED/PAINT P-5
1	⑧	SALES / HALLWAY	3'-0" X 7'-0" X 1 3/4"	HOLLOW METAL	METAL	NONE	E-1	G-3 A00.1 G-3 A00.1 G-3 A00.1	PAINT SALES SIDE P-5
1	⑨	OFFICE DOOR	3'-0" X 7'-0" X 1 3/4"	HOLLOW METAL	METAL	NONE	G	G-3 A00.1 G-3 A00.1 G-3 A00.1	PAINT P-5
-	⑩	BLIND DOOR	2'-6" X 7'-3"	WOOD	WOOD	NONE	A	A A08.3b A A08.3b C A08.3b	PAINT P-2/P-5
-	⑪	SALES / NON-SALES	3'-0" X 7'-0" X 1 3/4"	HOLLOW METAL	METAL	NONE	H	G-3 A00.1 G-3 A00.1 G-3 A00.1	PAINT SALES SIDE P-30 & NON-SALES SIDE P-5
-	⑫	CLOSET DOOR	2'-0" X 7'-0" X 1 3/4"	HOLLOW METAL	METAL	NONE	L	G-3 A00.1 G-3 A00.1 G-3 A00.1	PAINT P-5
1	⑬	NON-SALES / HALLWAY	3'-0" X 7'-0" X 1 3/4"	HOLLOW METAL	METAL	NONE	H	G-3 A00.1 G-3 A00.1 G-3 A00.1	PAINT P-5
-	⑭	BLIND DOOR	2'-0" X 7'-0"	WOOD	WOOD	NONE	A	A A08.3b A A08.3b C A08.3b	GYP. BD. OVER WOOD FRAMING
1	⑮	(E) SERVICE DOOR	EXISTING DOOR & FRAME TO REMAIN				J,K	-	NEW HARDWARE / PAINT P-5
-	⑯	SERVICE DOOR	3'-6" X 7'-0" X 1 3/4"	METAL	METAL	1 HR	J,K	-	NEW DOOR
-	⑰	ENTRY GRILLE	10'-0"X 13'-4"	METAL	METAL	NONE	C-1	A A08.2 A A08.3b C A08.3b	
-	⑱	ENTRY GRILLE	10'-10"X 13'-4"	METAL	METAL	NONE	C-1	A A08.2 A A08.3b C A08.3b	
-	⑲	NOT USED	-	-	-	-	-	-	

HARDWARE GROUP A: BLIND DOOR
 3 OR 4 EA. HINGES: 205S 218 (MINIMUM 1" MIN. PER OF EVERY 30" HEIGHT)
 1 EA. ROLLER CATCH: IVES 336-B26
 1 EA. DEADBOLT: T.B.D. LOCK CORE TO BE BEST COMPATIBLE, KEY TO STORAGE/CLOSET DOOR.
 1 EA. FLUSH PULL: T.B.D.
 LOCATE CENTER OF DEADBOLT AT 18" A.F.F. ON SALES SIDE OF DOOR.
 FLUSH PULL CENTER AT 22" A.F.F.

HARDWARE GROUP B-1: FRAMED DOUBLE ENTRY DOOR (EXTERIOR)
 ENTRY DOOR AND HARDWARE SUPPLIED AND INSTALLED BY GENERAL CONTRACTOR AND INCLUDES THE FOLLOWING:
 1 PR. ALUMINUM FRAMED DOOR: STYLE & FINISH TO MATCH EXISTING.
 1 EA. PIVOT HINGES: TOP AND BOTTOM OFFSET PIVOT, STANDARD INTERMEDIATE PIVOT, STYLE & FINISH TO MATCH EXISTING.
 1 EA. CLOSER: TO MATCH EXISTING OVERHEAD CONCEALED CLOSER
 1 1/2" X 6" PEKMO THRESHOLD # 255
 2 U-CHANGE CYLINDERS
 1 MS-400 ADAMS RITE 3 POINT LOCK
 2 PR. DOOR PUSH/PULL
 1 EA. DOOR HOLDER: IVES 452-5'-B26D, US26D FINISH.
 FINISH TO MATCH EXISTING

HARDWARE GROUP B-2: FRAMED DOUBLE ENTRY DOOR (EXTERIOR)
 (E) EXTERIOR ENTRY DOOR - HARDWARE SUPPLIED AND INSTALLED BY G.C.
 HARDWARE:
 EXISTING HARDWARE TO REMAIN U.N.O.
 G.C. TO ENSURE PROPER FUNCTION AN REPAIR/REPLACE IN KIND IF REQUIRED
 LOCKSET: PROVIDE (2) SECURITY SOLUTIONS-U-CHANGE- RE-KEYABLE LOCK CYLINDERS

HARDWARE GROUP B-3: FRAMED DOUBLE ENTRY DOOR (INTERIOR)
 VESTIBULE DOOR AND HARDWARE SUPPLIED AND INSTALLED BY GENERAL CONTRACTOR AND INCLUDES THE FOLLOWING:
 1 PR. ALUMINUM FRAMED DOOR: STYLE & FINISH TO MATCH EXISTING.
 1 EA. PIVOT HINGES: TOP AND BOTTOM OFFSET PIVOT, STANDARD INTERMEDIATE PIVOT, STYLE & FINISH TO MATCH EXISTING.
 1 EA. CLOSER: TO MATCH EXISTING OVERHEAD CONCEALED CLOSER
 1 1/2" X 6" PEKMO THRESHOLD # 255
 2 PR. DOOR PUSH/PULL TO MATCH EXISTING
 1 EA. DOOR HOLDER: IVES 452-5'-B26D

HARDWARE GROUP D: FITTING ROOM
 FITTING ROOM PREFABRICATED DOOR SYSTEM AND HARDWARE SUPPLIED BY OWNER'S VENDOR (CSC WORLDWIDE), INSTALLED BY G.C.
 REFER TO CSC WORLDWIDE SHOP DRAWINGS FOR PARTS LIST AND INSTALLATION INSTRUCTIONS.
 G.C. TO PROVIDE DOOR STRIKE CUSHION TO BE INSTALLED ON VENDOR FURNISHED STRIKE. EVERBUILT SELF-ADHESIVE HEAVY DUTY FELT BLANKETS SKU# 149633 OR SOFT TOUCH FELT STRIPS 006406.

HARDWARE GROUP E-1: SALES/HALLWAY DOOR
 1 EA. PULL: SCHLAGE D SERIES NID70 RHODES, SINGLE DUMMY TRIM, ON FULL SIDE OF DOOR. 626 FINISH.
 1 EA. PUSH PLATE: ROCKWOOD #70F 8" X 16", STAINLESS STEEL FINISH, MOUNT BOTTOM AT 30" A.F.F.
 1 1/2 PR. HINGES: STANLEY FBB179, US26D FINISH.
 1 EA. KICKPLATE: ROCKWOOD, 10" HIGH BY 34" WIDE, MOUNTED 1" FROM BOTTOM OF DOOR ON SALES SIDE. US32D FINISH.
 1 EA. CLOSER: LCN P1460, DOOR MOUNTED ON SALES SIDE. ALUM. FINISH.
 1 EA. DOOR HOLDER: IVES 452-5'-B26D, US26D FINISH.
 1 EA. DOOR STOP: ROCKWOOD 461, US32D FINISH.

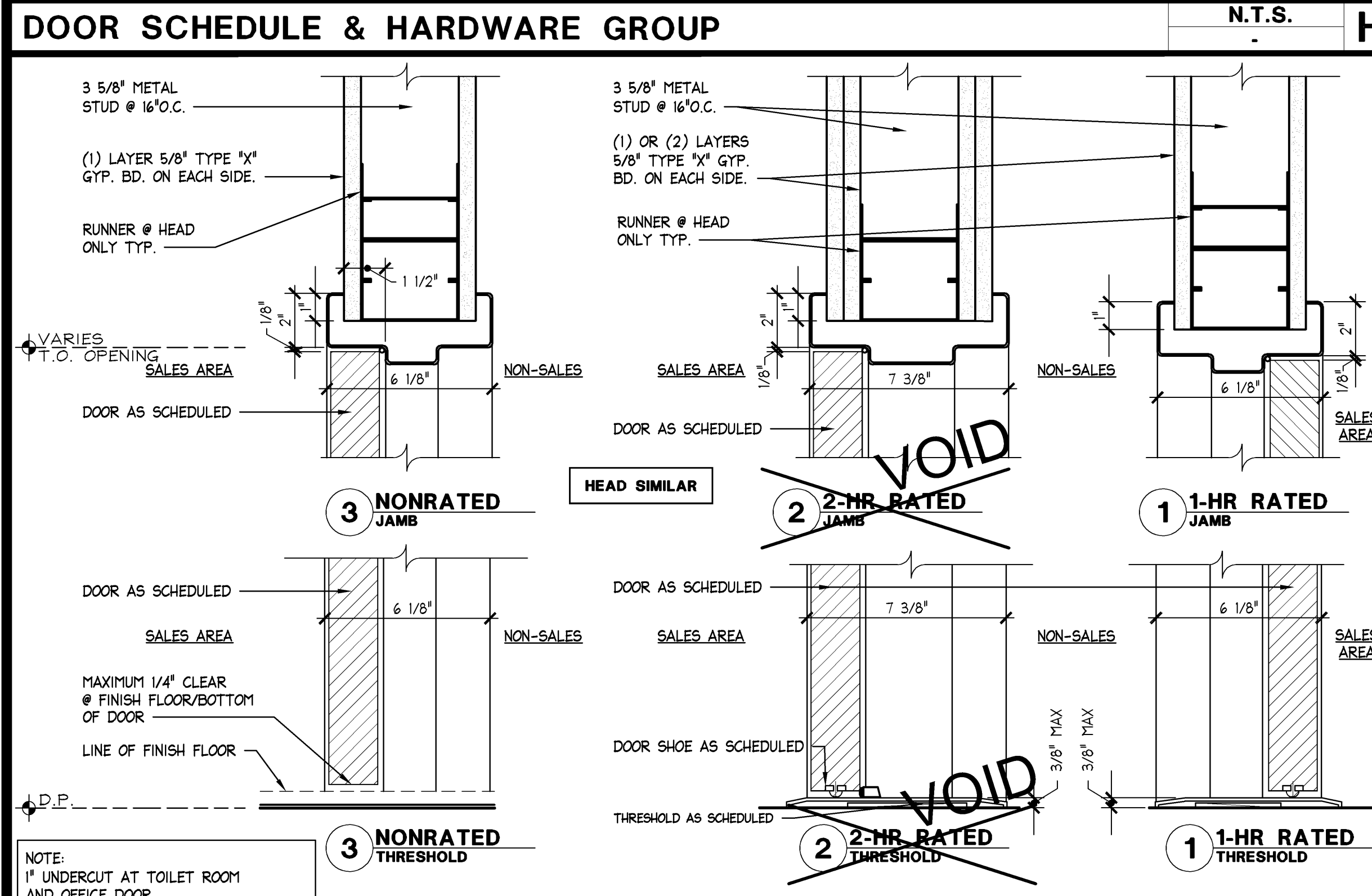
HARDWARE GROUP E-2: SALES/CORRIDOR AND NON-SALES
 WHEN REQUIRED BY CODE
 1 EA. SCHLAGE D SERIES NID70 RHODES, PASSAGE LATCH 626 FINISH.
 1 1/2 PR. HINGES: STANLEY FBB179, US26D FINISH.
 1 EA. KICKPLATE: ROCKWOOD, 10" HIGH BY 34" WIDE, MOUNTED 1" FROM BOTTOM OF DOOR ON SALES SIDE. US32D FINISH.
 1 EA. CLOSER: LCN P1460, DOOR MOUNTED ON NON-SALES SIDE. ALUM. FINISH.
 1 EA. DOOR HOLDER: IVES 425-5'-B26D, US26D FINISH.
 1 EA. DOOR STOP: ROCKWOOD 461, US32D FINISH.

HARDWARE GROUP F: TOILET ROOM DOOR
 1 1/2 PR. HINGES: STANLEY FBB179, US26D FINISH.
 1 EA. CLOSER: LCN P1460, US26D FINISH.
 1 EA. DOOR STOP: ROCKWOOD 461, US32D FINISH.
 1 EA. CLOSER: LCN, P1460, ALUMINUM FINISH.
HARDWARE GROUP G: OFFICE DOOR
 OFFICE DOOR TO BE KEYPED SEPARATELY FROM OTHER DOORS AND FROM R.M. AND R.A. OFFICES.
 OFFICE DOOR TO R.M. AND R.A. TO BE KEYPED ALIKE WHEN PRESENT.
 1 1/2 PR. HINGES: STANLEY FBB179, US26D FINISH.
 1 EA. LOCKSET: SCHLAGE NID50D RHODES, ENTRANCE LOCK, 626 FINISH.
 1 EA. SCHLAGE COMPATIBLE LOCK CORE. LOCK TO BE KEY OPERATED FROM NON-SALES SIDE OF DOOR.
 1 EA. DOOR STOP: ROCKWOOD 461, US32D FINISH.
 1 EA. CLOSER: LCN P1460, US26D FINISH.
 1 EA. CLOTHING HOOK: ROCKWOOD, 806 X 625 INSTALL AT MOUNT, CENTERED ON OFFICE SIDE OF DOOR AT 68" A.F.F. 626 FINISH.
 2 EA. PICTURE FRAMES: 1/2" X 11" BY G.C., MOUNT AT 54" A.F.F. TO OFFICE SIDE OF DOOR.

HARDWARE GROUP H: NON SALES/HALLWAY
 1 1/2 PR. HINGES: STANLEY FBB179, US26D FINISH.
 1 EA. LOCKSET: SCHLAGE NID50 RHODES, PASSAGE LATCH 626 FINISH.
 1 EA. CLOSER: LCN, P1460, US26D FINISH.
 1 EA. KICKPLATE: ROCKWOOD, 10" X 34" MOUNTED 1" FROM BOTTOM OF DOOR. US32D FINISH.
 1 EA. DOOR STOP: ROCKWOOD 461, US32D FINISH.

HARDWARE GROUP J: SERVICE DOOR- EMERGENCY EXIT
 G.C. TO PROVIDE AND INSTALL THESE ITEMS:
 1 1/2 PR. HINGES: STANLEY FBB179 WITH NON. REMOVABLE PIN, US26D FINISH.
 1 EA. KICKPLATE: ROCKWOOD, 10" HIGH - FULL WIDTH OF DOOR, MOUNTED 1" FROM BOTTOM OF DOOR. US32D FINISH.
 1 EA. CLOSER: LCN P1460, MOUNTED ON STORE SIDE OF DOOR. ALUM. FINISH.
 1 EA. LATCH COVER: LATCH-GUARD INC. 3" X 11" TAMPER PROOF.
 1 EA. SEAL/SWEEP: STANLEY 5070, US32D FINISH. MOUNT ON EXTERIOR SIDE AT BOTTOM TO PREVENT RODENT OR WATER PENETRATION.
 1 EA. PEEPHOLE: IVES 498 B26D FINISH. MOUNT AT 54" A.F.F. PROVIDE PERIMETER WEATHERSTRIPPING ON EXTERIOR DOOR.
 OWNER TO PROVIDE AND G.C. TO INSTALL THESE ITEMS:
 1 EA. ALARM LOCK, PANIC RELEASE - CENTER AT 45" A.F.F. (OR AS SPECIFIED PER CODE)
 1 EA. SIGN LABEL: LOCATE ON OUTSIDE FACE OF DOOR, CENTERED AT 66" A.F.F.
 NOTE: ANY DOOR LESS THAN 3'-6" WIDE MUST BE ABLE TO OPEN 154 DEGREES MINIMUM FOR ARM-A-DOOR PANIC RELEASE

HARDWARE GROUP K: RATED DOOR ACCESSORIES
 DOOR TO BE (1) OR (2) HOUR FIRE RATED TO COMPLY WITH STATE AND LOCAL CODES.
 FRAME TO BE (1) (2) OR (3/4) HOUR FIRE RATED TO COMPLY WITH STATE AND LOCAL CODES.
 1 EA. SMOKE GASKET: AT PERIMETER DOOR LOCATION.
 1 EA. CLOSER: LCN P1460, ALUMINUM FINISH.
 1 EA. PEKMO THRESHOLD # 176A
 1 EA. PEKMO SHOE # 234AV



DOOR THRESHOLD & JAMB (METAL FRAME) DETAILS 3" ± 1'-0" **G**

NON-SALES STOCKROOM	FURNISHED BY O G L	INSTALLED BY O G L	REMARKS
CEILING (OPEN TO DECK)			EXISTING
CEILING			
LIGHT FIXTURES (W/LAMPS)			
REAR SERVICE DOOR ALARM / BUZZER			
REAR SERVICE DOOR SIGNAGE			RUGGLES
WALL COVERING (MC-1)			
WALL BASE			
FLOORING			
METAL CORNER GUARDS			
SURFACE MOUNTED STANDARDS, BRACKETS, LADDER HOOKS, CLIPS, ETC.			
MELAMINE SHELVING			
SHELVING HARDWARE			PRE-MANUFACTURED SHELVING UNITS
SHELVING SYSTEM (FIXED & MOBILE)			
PROCESSING TABLE			
DRAWING PLAN TUBE			
SOUND SYSTEM			FINAL HOOK UP & TESTING BY OWNER - ALL THREAD ONLY
BINS			
FURNITURE			
BULLETIN BOARDS			
LOCKERS			
DRINKING FOUNTAIN			
DREAMSTEAMER UNIT			
TV CART/SHELF, REFRIGERATOR, MICROWAVE, BREAK TABLE W/ CHAIRS			
ALUM. KICKPLATES			

TOILET ROOMS

CEILING			EXISTING
LIGHT FIXTURES (W/LAMPS)			EXISTING/RELAMP
FLOOR AND WALL FINISH (PUBLIC)			
FLOOR AND WALL FINISH (NON-PUBLIC)			
SEALING			
WATERCLOSET (W/FLUSH VALVE AND SEAT)			EXISTING
HANDICAP GRAB BARS			EXISTING
LAVATORY (W/FAUCET)			EXISTING
MIRROR (ABOVE SINK)			PROVIDE IF NOT EXISTING
MIRROR (ON BACK OF DOOR)			PROVIDE IF NOT EXISTING
TOILET PAPER DISPENSER			PROVIDE IF NOT EXISTING
PAPER TOWEL DISPENSERS			PROVIDE IF NOT EXISTING
TRASH RECEPTACLE			PROVIDE IF NOT EXISTING
SIGNAGE			PROVIDE IF NOT EXISTING
FLOOR MOP SINK AND SPOIGOT W/ 42" HOSE			ADA APPROVED
FRICTION TYPE MOP HOLDER (DOUBLE & SINGLE STRIP) & HOSE HOLDER			
SHELVES AT LAVATORIES			
EXHAUST FAN			EXISTING
IN-WALL SOUND INSULATION			SEE E/A1B-1
CEMENT BACKERBOARD			SEE D/A1B-1
TOILET PARTITIONS (IF APPLICABLE)			

MANAGERS' OFFICE

FILE CABINET			
CEILING			
LIGHT FIXTURES (W/LAMPS)			
FLOORING			
WALL BASE			
FURNITURE			
SHELVES			
SHELVING HARDWARE			
MANAGER COUNTERTOP			

MECHANICAL

MECHANICAL WORK (AS SPECIFIED)
SEE MECHANICAL DRAWINGS

PLUMBING

PLUMBING WORK (AS SPECIFIED)
SEE PLUMBING DRAWINGS

FIRE PROTECTION

FIRE PROTECTION WORK (AS SPECIFIED)

ELECTRICAL

ELECTRICAL WORK (AS SPECIFIED)
SEE ELECTRICAL DRAWINGS

STRUCTURAL

STRUCTURAL WORK (AS SPECIFIED)
SEE STRUCTURAL DRAWINGS

CABINETS/FIXTURES	FURNISHED BY O G L	INSTALLED BY O G L	REMARKS
ACCESSORY CABINET: GABLES, SHELVES, ETC.			PREFAB/PREFIN. BY MANUFACTURER
1/4" PLATE GLASS MIRROR AT ACCESSORY CABINET BACK			SEE SHEET A10.3
PRE-FINISHED METAL PANELS			PASS THRU'S & DENIM WALL RETURNS MT-10 & MT-11
PLYWOOD BACKING (VARIOUS THICKNESS-AS NEEDED FOR STRUCTURAL SUPPORT)			F.R.T. AS REQUIRED
SURFACE-MOUNTED STANDARDS			
PRE-FINISHED SHELVING & HARDWARE			
FREESTANDING DISPLAY HALF-ROUND VITRINES, PLATFORM & FAUX UPRIGHT SHOPPING AREA-FREESTANDING PARTIAL HEIGHT WALL, PLATFORM & ALL ASSEMBLY			PREFAB/PREFIN. BY MFR. SEE SHEET A10.1
INTERIOR SIGNAGE			SEE SHEET A10.1
CASHMIRAS			PREFAB/PREFIN. BY MFR., ROUGH IN POWER BY G.C.
CASHMIRAS			
FLOOR FIXTURES (TABLES ETC.)			
MANNEQUINS			MANNEQUINS TO BE UNPACKED & PLACED ON SALES FLOOR BY G.C.
WALL MTD. MIRROR FRAMES			
MIRROR GLASS W/ POLISHED EDGES			SALES FLOOR
1/4" PLATE GLASS MIRROR FOR DENIM ROOM PER PLAN			

SALES-FITTING ROOM

WALLCOVERING			
PREFINISHED DOORS (PRE-HUNG)			CSC WORLDWIDE
DOOR HARDWARE			CSC WORLDWIDE
PREFINISHED HEAD, JAMB & TRIM PIECES FOR FITTING ROOM DOORS			
DOOR BUMPER			CSC WORLDWIDE
PREFABRICATED HANG BARS			CSC WORLDWIDE
PREFABRICATED GRAB BAR			
BENCH/STOOL			CSC WORLDWIDE
FITTING ROOM HINGE MIRROR			
WALL MOUNTED FITTING ROOM MIRROR			CSC WORLDWIDE
3-WAY MIRROR			
WALL BASE			SEE FINISH SCHEDULE
FLOORING			SEE FINISH SCHEDULE
WOOD FLOORING-ADHESIVE			
GO-BACK NICHE SHELF			
GO-BACK NICHE HANGBARS			CSC WORLDWIDE
PREFABRICATED FITTING ROOM WALL PANELS			CSC WORLDWIDE
DOOR STRIKE CUSHION			

SALES AREA

BRUSHED ALUMINUM CEILING RAIL			FOR TRACK LIGHTING LAMBERT
WILES FIELD DRILLED IN BRUSHED ALUMINUM CEILING RAIL FOR TRACK POWER END			
LIGHT FIXTURES (W/ LAMPS)			
PAINT/PRIMER			
SPEAKERS, AUXILIARY AUDIO INPUT, & WIRING			
SPEAKER ENCLOSURES			
SPEAKER WIRING CONDUIT			AS REQUIRED BY CODE; PROVIDE FULL STRING FOR VENDOR
SPEAKER LINE TESTING, SYSTEM PERFORMANCE CHECKOUT & SYSTEM SIGNOFF			
THREADED ROD & UNISTRUT SUPPORTS			OPEN CEILING APPLICATION, BY ELECTRICAL CONTRACTOR
CEILING GRILLES (RECTANGLE AND LINEAR)			
WALL BASE			SEE FINISH SCHEDULE
ANTI-FATIGUE MAT			
BRAKE METAL AT DENIM PASS-THRU			LAMBERT
TRAFFIC COUNTER			CONDUITS & J BOX BY G.C.
CEILING HUNG MARKETING RAILS			BLOCKING BY G.C.
FLOOR TRANSITION STRIPS			
FLOORING FILL AND PREPARATION			
EXPOSED CONCRETE FLOOR SEALER			
WOOD FLOORING			
CARPET			
PREFINISHED METAL COLUMN ENCLOSURE			FRAMING & BACKING BY G.C. SEE SHEET A12.5
BACKDROP THEATRE CURTAIN			
DENIM CURTAIN - PACKAGE 'A' & 'B'			
ALUMINUM KICK PLATES			
STANCHIONS			FASTEN BASE PLATE TO FLOOR, PER MANUFACTURERS INSTRUCTIONS
24" X 48" A.C.T. SUSPENSION GRID SYSTEM			

TRIMS

MIRROR TOP / BOTTOM J-MOLD - SALES AREA			LAMBERT
MIRROR TRIMS AT DENIM RM, FITTING RM, LAVS, ETC.			SEE A10.2a

GENERAL	FURNISHED BY O G L	INSTALLED BY O G L	REMARKS
GYPSTUM BOARD: CEILINGS, WALLS, ETC. AND REQUIRED FRAMING & BLOCKING			
CONCEALED IN-WALL WOOD OR METAL BLOCKING & SPECIFIED FASTENERS FOR ALL ITEMS IN STORE			F.R.T. AS REQUIRED
CONCEALED SHIMS (VARIOUS SIZE)			
FITTINGS AND STRUCTURAL SUPPORTS			
HOLLOW METAL DOORS & FRAMES (TYP.)			
DOOR HARDWARE (TYP.)			
TEMPERED GLASS			
SEALANT			
PLATE GLASS MIRROR (W/ POLISHED EDGES)			
PAINT			
CORNER BEADS			
FIRE EXTINGUISHERS			
EXIT LIGHTS			
ACCESS PANELS (GYP. BD.)			
LATERAL BRACING			AS REQUIRED BY CODE
MOISTURE BARRIER			PER SITE CONDITIONS, AS REQUIRED BY CODE
DENSIFYING WALL - STUDS			EXISTING
DENSIFYING WALL - GYP. BD.			PATCH/REPAIR AS REQ'D
UNISTRUT / ALL THREAD			
BURGLAR ALARM SYSTEM			WHEN INDICATED IN ELECTRICAL-CONSTRUCTION DOCUMENTS
EXPANSION JOINT COVER (FLOOR TYPE)			
EXPANSION JOINT COVER (WALL TYPE)			
DEMOLITION			
INTERIOR BARRICADE/FINISH			BY BOSTON BARRICADE
EXTERIOR BARRICADE/FINISH			AT TENANT G.C. EXPENSE
BARRICADE GRAPHICS (TENANT)			PER EXPRESS SPEC'S
TEMPORARY POWER			AT TENANT G.C. EXPENSE
TEMPORARY LIGHTING			
TEMPORARY DATA/TELEPHONE LINES			OPERATIONAL LANDLINE REQ'D AT TIME OF HVAC COMMISSIONING
BRACING/SHORING			
DUMPSTER			
SURFACE MOUNTED STANDARDS			PHASED PROJECT
SHELVING			PHASED PROJECT
SHELVING HARDWARE			PHASED PROJECT
DEMOLITION TO A MINIMUM CLEAR HEIGHT OF 19'-0" AFF			COORDINATE W/ DEMOLITION PLAN & ENGINEERING DRAWINGS
CONSTRUCTION WINDOW PAPER			

STOREFRONT

WALL FLOORING																																																																																																																																																																																																																																																																																																																																																																																																																																																																																																																																																																																																																																																																																																																																																																																																																																																																																																																																																																																																																																																																																																																																																																																																																																																																																																																																																																																																																																																</
---------------	--	--	--	--	--	--	--	--	--	--	--	--	--	--	--	--	--	--	--	--	--	--	--	--	--	--	--	--	--	--	--	--	--	--	--	--	--	--	--	--	--	--	--	--	--	--	--	--	--	--	--	--	--	--	--	--	--	--	--	--	--	--	--	--	--	--	--	--	--	--	--	--	--	--	--	--	--	--	--	--	--	--	--	--	--	--	--	--	--	--	--	--	--	--	--	--	--	--	--	--	--	--	--	--	--	--	--	--	--	--	--	--	--	--	--	--	--	--	--	--	--	--	--	--	--	--	--	--	--	--	--	--	--	--	--	--	--	--	--	--	--	--	--	--	--	--	--	--	--	--	--	--	--	--	--	--	--	--	--	--	--	--	--	--	--	--	--	--	--	--	--	--	--	--	--	--	--	--	--	--	--	--	--	--	--	--	--	--	--	--	--	--	--	--	--	--	--	--	--	--	--	--	--	--	--	--	--	--	--	--	--	--	--	--	--	--	--	--	--	--	--	--	--	--	--	--	--	--	--	--	--	--	--	--	--	--	--	--	--	--	--	--	--	--	--	--	--	--	--	--	--	--	--	--	--	--	--	--	--	--	--	--	--	--	--	--	--	--	--	--	--	--	--	--	--	--	--	--	--	--	--	--	--	--	--	--	--	--	--	--	--	--	--	--	--	--	--	--	--	--	--	--	--	--	--	--	--	--	--	--	--	--	--	--	--	--	--	--	--	--	--	--	--	--	--	--	--	--	--	--	--	--	--	--	--	--	--	--	--	--	--	--	--	--	--	--	--	--	--	--	--	--	--	--	--	--	--	--	--	--	--	--	--	--	--	--	--	--	--	--	--	--	--	--	--	--	--	--	--	--	--	--	--	--	--	--	--	--	--	--	--	--	--	--	--	--	--	--	--	--	--	--	--	--	--	--	--	--	--	--	--	--	--	--	--	--	--	--	--	--	--	--	--	--	--	--	--	--	--	--	--	--	--	--	--	--	--	--	--	--	--	--	--	--	--	--	--	--	--	--	--	--	--	--	--	--	--	--	--	--	--	--	--	--	--	--	--	--	--	--	--	--	--	--	--	--	--	--	--	--	--	--	--	--	--	--	--	--	--	--	--	--	--	--	--	--	--	--	--	--	--	--	--	--	--	--	--	--	--	--	--	--	--	--	--	--	--	--	--	--	--	--	--	--	--	--	--	--	--	--	--	--	--	--	--	--	--	--	--	--	--	--	--	--	--	--	--	--	--	--	--	--	--	--	--	--	--	--	--	--	--	--	--	--	--	--	--	--	--	--	--	--	--	--	--	--	--	--	--	--	--	--	--	--	--	--	--	--	--	--	--	--	--	--	--	--	--	--	--	--	--	--	--	--	--	--	--	--	--	--	--	--	--	--	--	--	--	--	--	--	--	--	--	--	--	--	--	--	--	--	--	--	--	--	--	--	--	--	--	--	--	--	--	--	--	--	--	--	--	--	--	--	--	--	--	--	--	--	--	--	--	--	--	--	--	--	--	--	--	--	--	--	--	--	--	--	--	--	--	--	--	--	--	--	--	--	--	--	--	--	--	--	--	--	--	--	--	--	--	--	--	--	--	--	--	--	--	--	--	--	--	--	--	--	--	--	--	--	--	--	--	--	--	--	--	--	--	--	--	--	--	--	--	--	--	--	--	--	--	--	--	--	--	--	--	--	--	--	--	--	--	--	--	--	--	--	--	--	--	--	--	--	--	--	--	--	--	--	--	--	--	--	--	--	--	--	--	--	--	--	--	--	--	--	--	--	--	--	--	--	--	--	--	--	--	--	--	--	--	--	--	--	--	--	--	--	--	--	--	--	--	--	--	--	--	--	--	--	--	--	--	--	--	--	--	--	--	--	--	--	--	--	--	--	--	--	--	--	--	--	--	--	--	--	--	--	--	--	--	--	--	--	--	--	--	--	--	--	--	--	--	--	--	--	--	--	--	--	--	--	--	--	--	--	--	--	--	--	--	--	--	--	--	--	--	--	--	--	--	--	--	--	--	--	--	--	--	--	--	--	--	--	--	--	--	--	--	--	--	--	--	--	--	--	--	--	--	--	--	--	--	--	--	--	--	--	--	--	--	--	--	--	--	--	--	--	--	--	--	--	--	--	--	--	--	--	--	--	--	--	--	--	--	--	--	--	--	--	--	--	--	--	--	--	--	--	--	--	--	--	--	--	--	--	--	--	--	--	--	--	--	--	--	--	--	--	--	--	--	--	--	--	--	--	--	--	--	--	--	--	--	--	--	--	--	--	--	--	--	--	--	--	--	--	--	--	--	--	--	--	--	--	--	--	--	--	--	--	--	--	--	--	--	--	--	--	--	--	--	--	--	--	--	--	--	--	--	--	--	--	--	--	--	--	--	--	--	--	--	--	--	--	--	--	--	--	--	--	--	--	--	--	--	--	--	--	--	--	--	--	--	--	--	--	--	--	--	--	--	--	--	--	--	--	--	--	--	--	--	--	--	--	--	--	--	--	--	--	--	--	--	--	--	--	--	--	--	--	--	--	--	--	--	--	--	--	--	--	--	--	--	--	--	--	--	--	--	--	--	--	--	--	--	--	--	--	--	--	--	--	--	--	--	--	--	--	--	--	--	--	--	--	--	--	--	--	--	--	--	--	--	--	--	--	--	--	--	--	--	--	--	--	--	--	--	--	--	--	--	--	--	--	--	--	--	--	--	--	--	--	--	--	--	--	--	--	--	--	--	--	--	--	--	--	--	--	--	--	--	--	--	--	--	--	--	--	--	--	--	--	--	--	--	--	--	--	--	--	--	--	--	--	--	--	--	--	--	--	--	--	--	--	--	--	--	--	--	--	--	--	--	--	--	--	--	--	--	--	--	--	--	--	--	--	--	--	--	--	--	--	--	--	--	--	--	--	--	--	--	--	--	--	--	--	--	--	--	--	--	--	--	--	--	--	--	--	--	--	--	--	--	--	--	--	--	--	--	--	--	--	--	--	--	--	--	--	--	--	--	--	--	--	--	--	--	--	--	--	--	--	--	--	--	--	--	--	--	--	--	--	--	--	--	--	--	--	--	--	--	--	--	--	--	--	--	--	--	--	--	--	--	--	--	--	--	--	--	--	--	--	--	--	--	--	--	--	--	--	--	--	--	----